

GULF COAST FANS, INC.
Dual Slide Wall Control
Installation Instructions

Combination Wall-Mounted
"Speed Control and Light Switch"

IMPORTANT: READ THESE INSTRUCTIONS CAREFULLY BEFORE ATTEMPTING TO INSTALL THIS ELECTRICAL DEVICE.

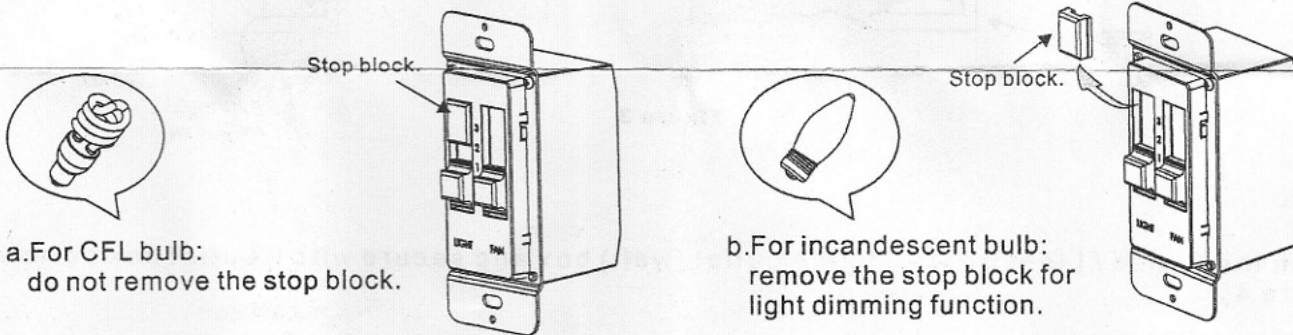
Installation of this control requires that a three-conductor cable with ground wire be run between the control wall box and the ceiling fan outlet box.

WARNING

TO AVOID FIRE, SHOCK AND SERIOUS PERSONAL INJURY, FOLLOW THESE INSTRUCTIONS.

1. READ YOUR OWNER'S MANUAL CAREFULLY. RETAIN OWNER'S MANUAL FOR FUTURE REFERENCE.
2. TO AVOID POSSIBLE ELECTRICAL SHOCK, BE SURE ELECTRICITY IS TURNED OFF AT THE FUSE BOX OR CIRCUIT BREAKER PANEL BEFORE WIRING.
3. DO NOT MOUNT SPEED CONTROL NEAR HEAT PRODUCING EQUIPMENT.
4. ALL WIRING MUST CONFORM TO NATIONAL AND LOCAL ELECTRICAL CODES. IF YOU FEEL YOU DO NOT HAVE ENOUGH ELECTRICAL KNOWLEDGE, HAVE A LICENSED ELECTRICIAN INSTALL THE CONTRAL.
5. USE OF THIS CONTROL WITH SOME CEILING FANS COULD RESULT IN FIRE, SHOCK AND SERIOUS PERSONAL INJURY. USE THIS SPEED CONTROL ONLY WITH CAPACITOR SPEED CONTROLLED CEILING FANS.

1. This wall control is designed for CFL & incandescent bulb use.



2. Disconnect the power and remove the existing wall plate and switch. (Figure 1)
3. Set all knobs on the dual slide wall control in the off position (Figure 2).

Figure 1

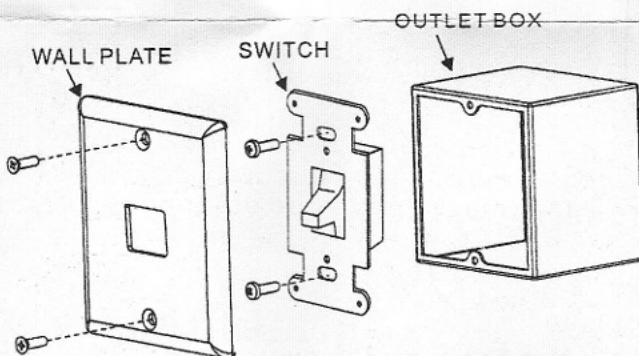
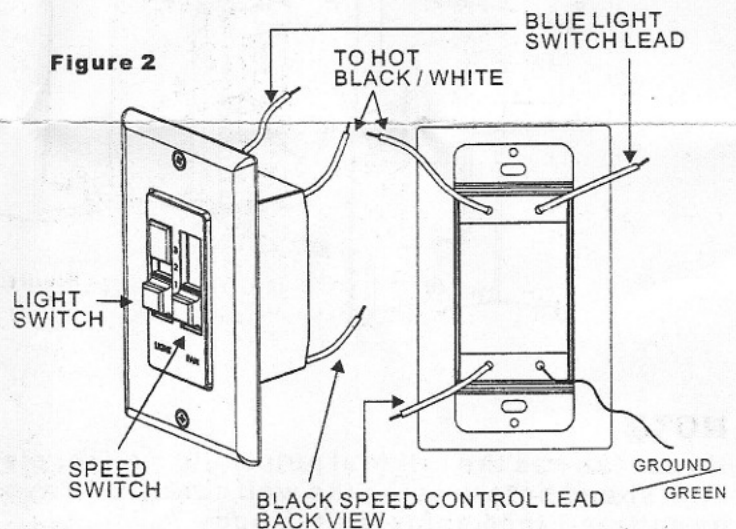


Figure 2



4. Make wire connections (Figure 3) and secure with wire nuts supplied.

*Black wire from fan to black wire from speed control.

*White wire from fan to white wire from the A/C supply source.

*Green ground wire from control to green ground or bare ground wire from supply.

*Blue wire from fan to blue wire from light control.

Refer to Schematic "A" or "B", depending upon the location of your A/C supply source (Figure 3).

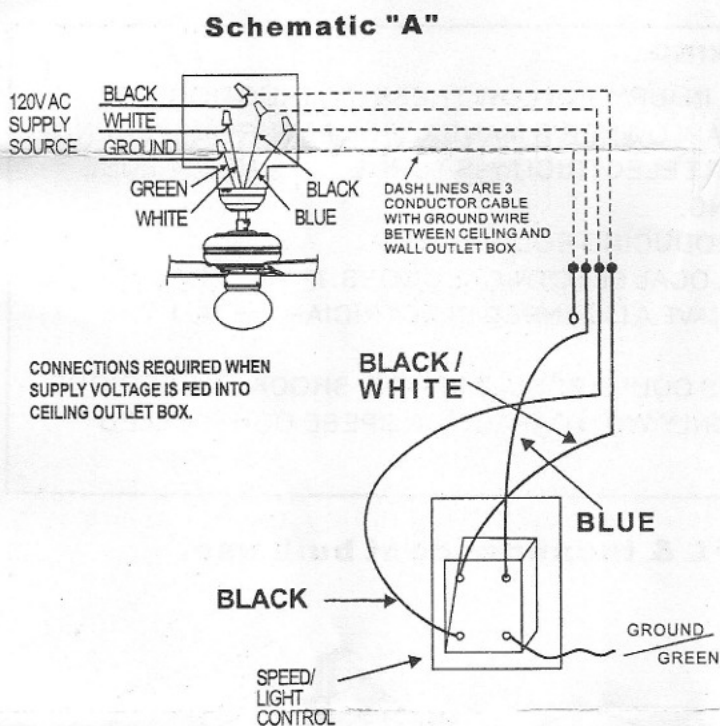
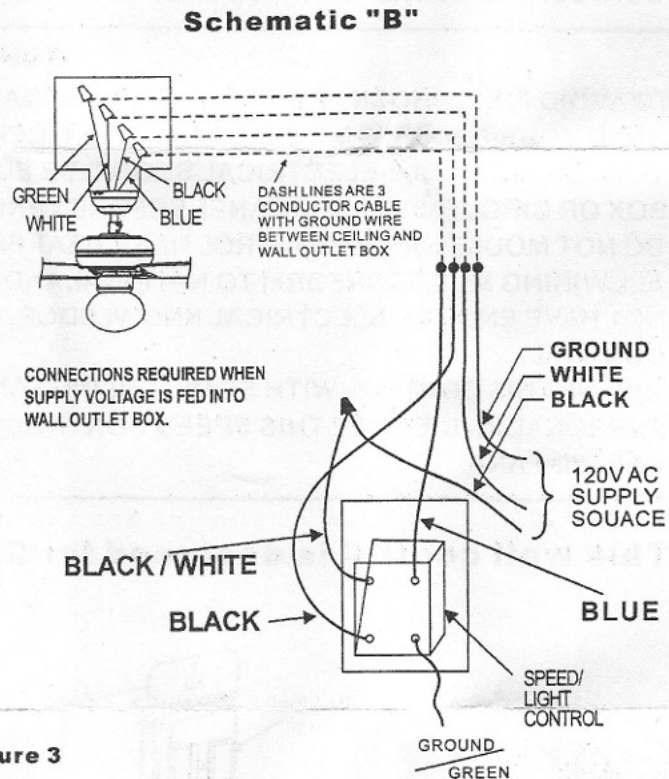


Figure 3



5. Attach the Speed / Light Control to the outlet (wall) box and secure with 2 outlet box screws (Figure 4).

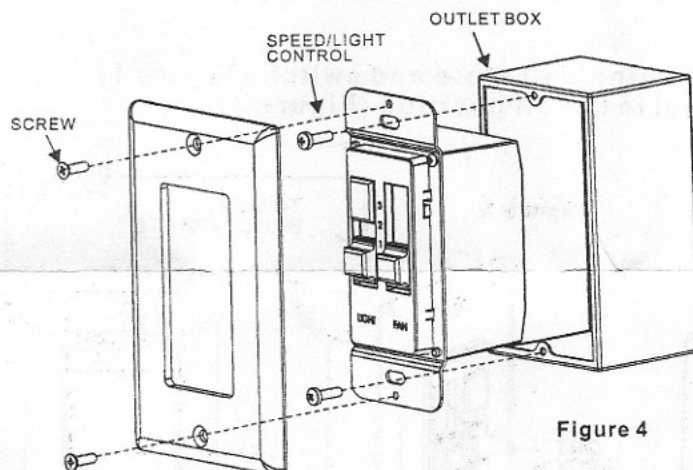


Figure 4

NOTE

If your fan has the original pull chain switch, please always have the fan switch set to high speed before using the wall control. To avoid accidental pull chain use, shorten chain by cutting 1 inch below switch body.