

READ AND SAVE THESE INSTRUCTIONS

Uno

Professional Installation Recommended

Thank you for purchasing a Gulf Coast Fans, Inc. product. It will provide years of cost efficient comfort. With over a decade of experience in ensuring quality workmanship at an affordable price, we stand behind our product and we hope you will too.

IMPORTANT PRECAUTIONS

- 1 Read these instructions carefully before you start.
- 2 Turn off the power at the source before installation, servicing, or cleaning.
- 3 **WARNING--TO REDUCE THE RISK OF FIRE OR ELECTRIC SHOCK, DO NOT USE THIS FAN WITH ANY SOLID STATE SPEED CONTROL DEVICE. USE ONLY GULF COAST CONTROLS.**
- 4 **WARNING-- DO NOT INSERT FOREIGN OBJECTS IN ROTATING FAN BLADE.**
- 5 **WARNING--TO REDUCE THE RISK OF FIRE, ELECTRIC SHOCK, OR PERSONAL INJURY, MOUNT FAN TO AN OUTLET BOX MARKED "ACCEPTABLE FOR FAN SUPPORT" AND USE MOUNTING SCREWS PROVIDED WITH THE OUTLET BOX.**
- 6 If you don't feel comfortable hanging and wiring this fan, we recommend that you hire a qualified electrician to install it.
- 7 All wiring and electrical connections must meet the National Electrical Code and any local codes that may apply.
- 8 After installation, fan blade must be at least seven (7) feet from the floor.

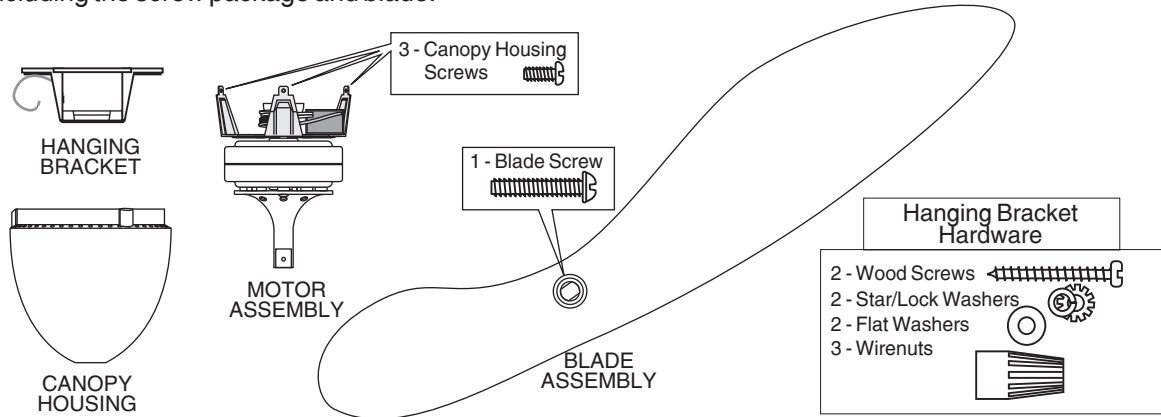
To begin with, the site of installation must be clear of any obstructions. Walls, cabinet or cupboard doors, and AC/heating vents (strong air currents will cause fan to wobble) are common obstructions.

Also, you will need a securely mounted outlet box that is listed for fan support. You may also mount fan directly to a ceiling joist, but you may need a Ceiling Fan Swag Kit to provide power.

The only tools you will need are : A medium Phillips screwdriver, common sense, and a little caution.

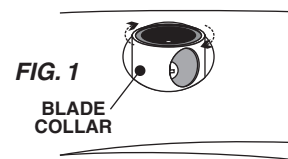
I. Inventory the parts. Remove all of the parts from the top styrofoam and remove the styrofoam. Use this top piece to support the fan during preliminary assembly.

A. Remove all parts from plastic bags, including the screw package and blade.



II Preliminary Assembly.

A. On the Blade Assembly, rotate the Blade Collar (see Fig 1) to expose the Blade Screw. Remove the Blade Screw from the blade.

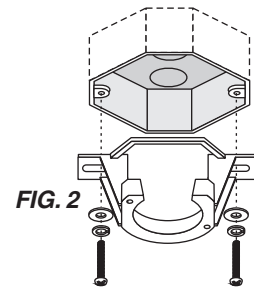


B. The bracket on top of the Motor Assembly has a "front leg" that is bent differently, than the other two. Remove the Canopy Housing Screw from the "front leg". Loosen the other two Canopy Housing Screws approximately 1/8" to 1/4".

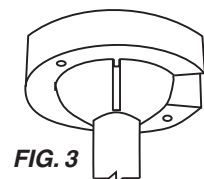
C. Around the top edge of the Canopy Housing, flip open the three screw covers. Behind the covers are one screw hole and two keyways; the screw hole is the "front".

WARNING - To Reduce The Risk Of Fire, Electric Shock, Or Personal Injury, If Mounting Fan To Outlet Box, Use Outlet Box Marked "Acceptable For Fan Support" And Use The Mounting Screws Provided With The Outlet Box.

D. Using the screws that came with the outlet box, each with a star/lock washer and flat washer, secure the Hanging Bracket to the outlet box. Fig. 2 If you are attaching directly to the building's structural joist, use the Wood Screws provided, with the star/lock washers and flat washers. Make sure the Hanging Bracket is securely attached so that there is no movement.

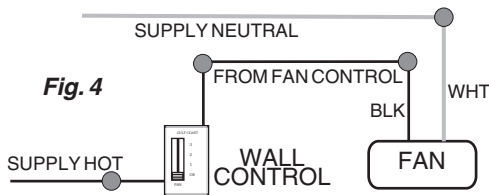


III. Now to hang the fan... The "front" of the Hanging Bracket has an opening for placing the ball. Holding the Motor Assembly carefully, lift it up to hanging bracket. Keep it mostly level to prevent scraping the ceiling. Place the ball into cradle of the bracket. With the "fronts" lined up, the tab on the Hanging Bracket should be in the groove of the Ball on the right side. If it is not, turn the entire motor assembly until it locks into place. The tab on the bracket must be in the groove in the ball. See Fig. 3. Make sure the wires are not being pinched.



IV. Wiring methods and instructions.

Shown below are 2 basic wiring methods. Since this fan can be operated using a Wall Control or Remote Control, the best wiring methods are included with those devices and should be followed primarily. Keep in mind, the supply wire colors may vary. (The wire colors in parentheses are commonly found in existing structures.) Use the large wirenuts to make the connections.



Wall control operation of fan See Fig. 4.
(Use the instructions included with the control.)

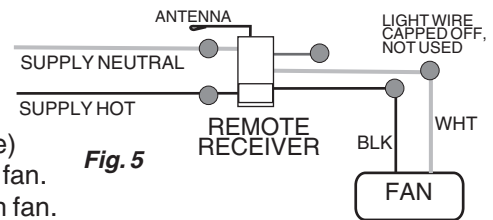
1. Green ground wires to outlet box ground. (bare)
2. Black wire from fan to (black) wire from fan control.
3. White wire from fan to neutral supply. (white)

OR

Remote Control operation of fan See Fig 5.

(Use the instructions included with the control.)

1. Green ground wires to outlet box ground. (bare)
2. AC IN L Black wire from receiver to hot supply. (black)
3. AC IN N White wire from receiver to neutral supply. (white)
4. TO MOTOR L Black wire from receiver to Black wire from fan.
5. TO MOTOR N White wire from receiver to White wire from fan.
6. FOR LIGHT Blue wire from receiver capped off (No Light Option)

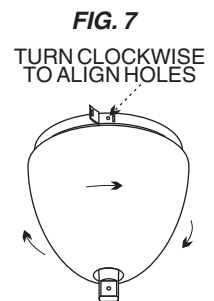
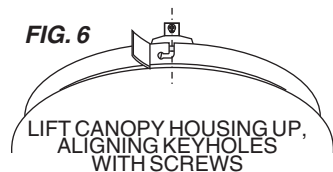


The Remote Receiver is tucked above the ball in the Hanging Bracket. Tip the motor slightly backward to open a gap for it to slide in above the "front leg". Position the antenna wire so that it will stick out slightly from the top of the Canopy Housing. You may position the receiver unit prior to wiring.

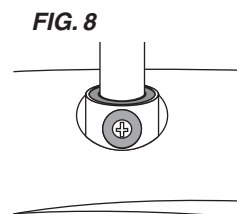
Now tuck the wires and wirenuts carefully into the outlet box. Make sure the Green and White wires are tucked into one side of the box and the Black wire is tucked into the other side of the box. Make sure wirenuts remain tightly on connections. Make sure no wires are dangling in the way of the motor.

V. Final Assembly

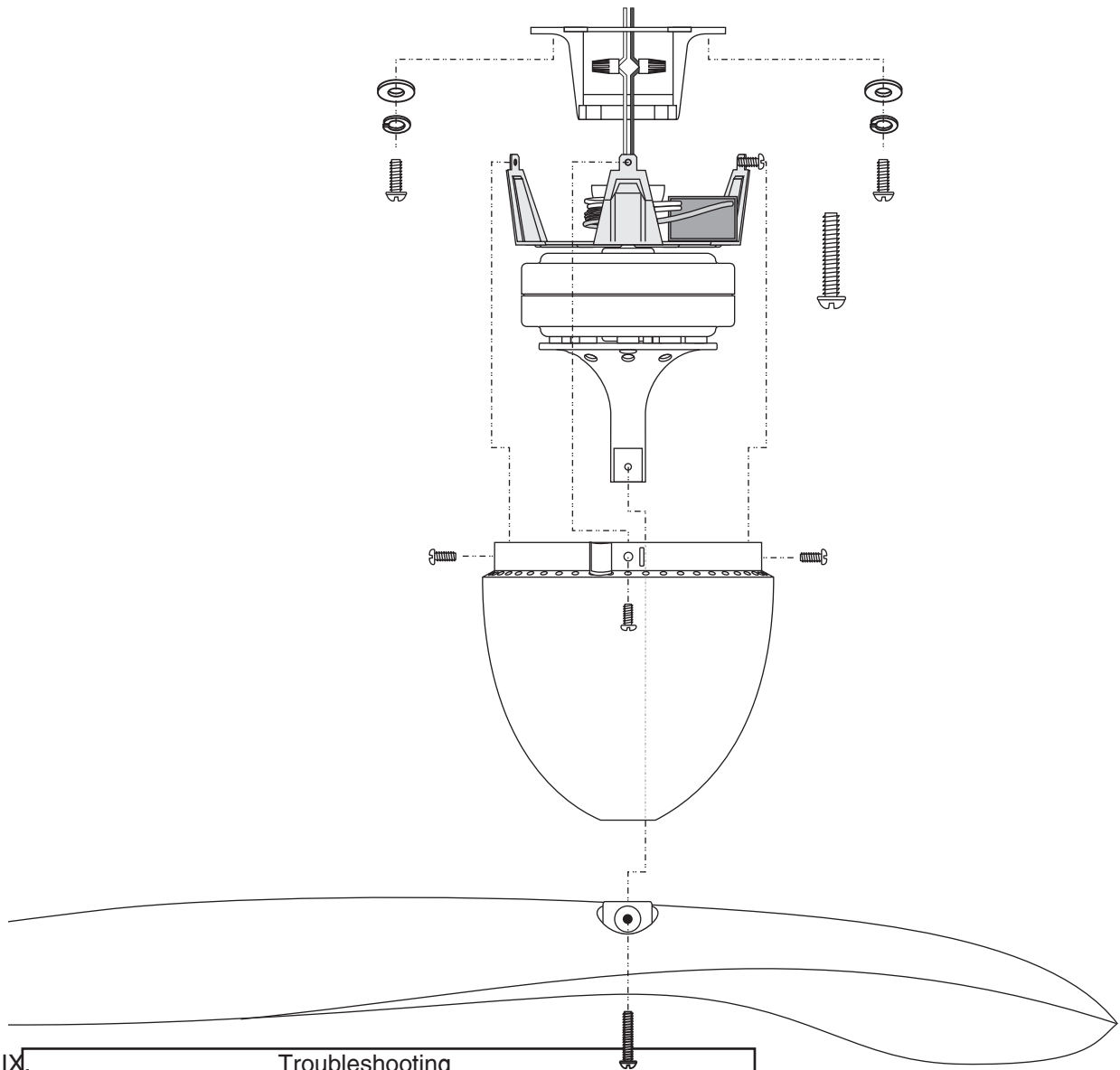
- A. Carefully lift the Canopy Housing up to the Motor Assembly, with "front" screw hole near the "front leg" The Canopy Housing Screws that were loosened earlier should slide up into the keyways in the Canopy Housing. See Fig 6. Rotate the Canopy Housing slightly clockwise to lock in those screws and line up the "front" screw hole with the open screw hole in the "front leg" See Fig. 7. Insert the screw and tighten all three screws. Snap closed the three screw covers.



- B. Lift the Blade Assembly up to the bottom of the Motor Assembly. Align the flat sides of the motor shaft with the flat sides of the opening in the Blade Assembly. Insert the Blade Screw through the Blade Assembly, through the motor shaft and thread it into the the Blade Assembly and tighten securely. See Fig. 8. Blade should be free to pivot slightly up and down. Rotate the Blade Collar to hide the Blade Screw.



VIII. Turn the power supply back on and prepare to be comfortable.



IX.	Troubleshooting
Fan won't run -	Check power supply. Wire is pulled out of wire connector.
Fan makes noise - Allow 24 hrs. running time to seat bearings.	Screw(s) loose. Ball is not seated properly in hanging bracket. Variable speed control (dimmer) in circuit.
Fan wobbles -	Bracket is loose at the ceiling. Loose screw(s) at top of fan. Ball not seated properly in hanging bracket.

We recommend that you retighten any screws after fan has been up for 30 to 60 days.

Our service department is always ready to help. We stand behind our product and always strive to satisfy our customer.

Gulf Coast Fans, Inc.
300 Dunbar Avenue
Oldsmar, Florida 34677
(813)-855-7384

Portions ©1993 Gulf Coast Fans, Inc.