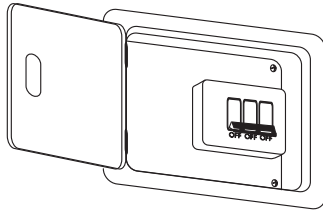


# EXTENDED DOWNROD INSTALLATION INSTRUCTIONS ~ For Mustang and Mustang II models ~

## NOTES BEFORE INSTALLATION

### Note 1:

Turn off power at breaker box to avoid possible electrical shock.



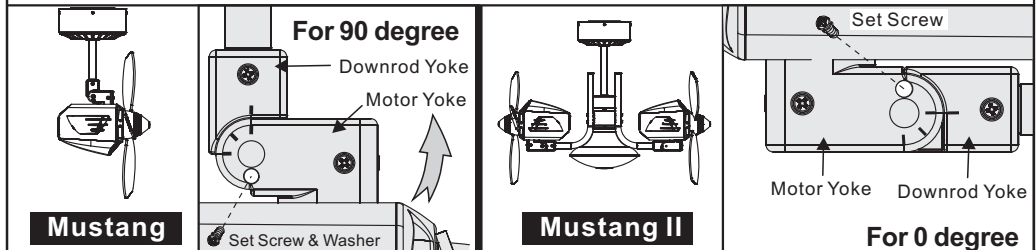
### Note 2:

For easy installation,

① have the motor position of **Mustang** at **90 degree** as picture shown.

② have the motor position of **Mustang II** at **0 degree** as picture shown.

Remove set screw & spring washer from motor yoke, adjust motor position as shown below. Secure set screw & spring washer after adjustment.



### Note 3:

Please keep the screws and parts well organized during the removal process so that all the proper screws and parts go back to their original positions during reassembly.

### Note 4:

This instruction manual assumes the fan has already been fully installed.

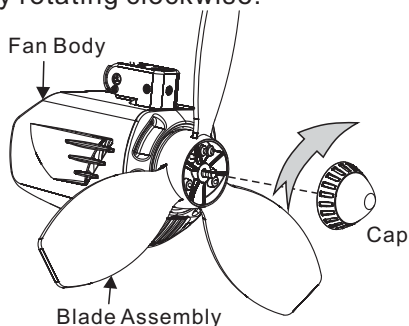
If the fan has not already been installed, you can skip Steps 1 through 3C, and start at Step 3D.

## REMOVAL PROCEDURE

### 1. REMOVE BLADE ASSEMBLY & LIGHT KIT

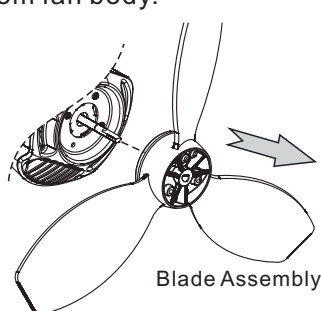
#### 1A.

Remove cap from blade assembly by rotating clockwise.



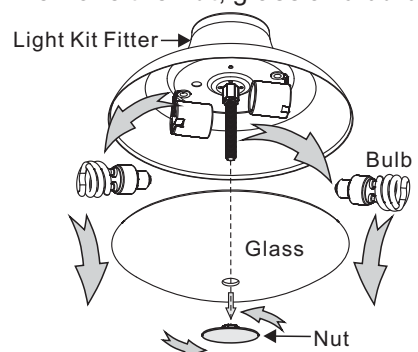
#### 1B.

Remove the blade assembly from fan body.



#### 1C. (For Mustang II)

Remove the nut, glass and bulbs.



### 2. REMOVE CANOPY AND HANGING BASE SYSTEM

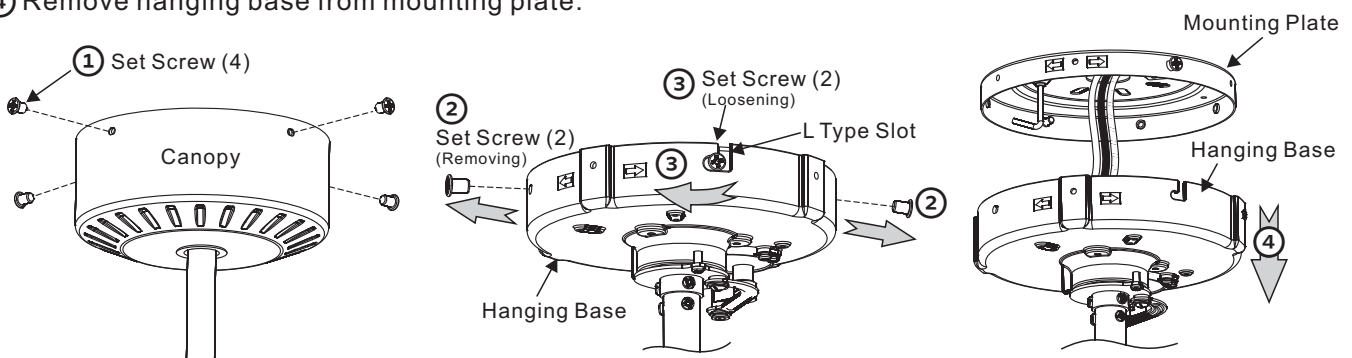
#### 2A. Removing Canopy & Hanging Base

① Remove 4 set screws from canopy. (Keep them for Step 9B.)

② Remove 2 set screws from the screw holes of hanging base. (Keep them for Step 9A.- ④.)

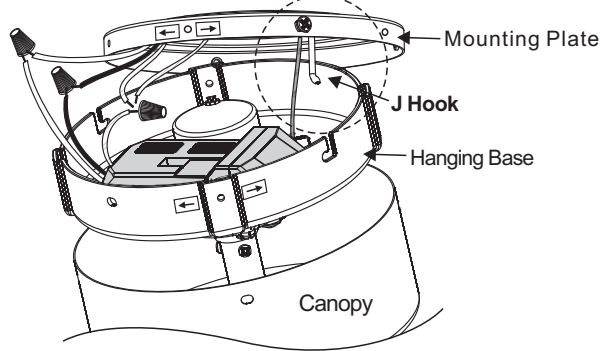
③ Loosen 2 set screws from the L type slots of hanging base, and move hanging base towards the left.

④ Remove hanging base from mounting plate.



## 2B. Hanging the fan

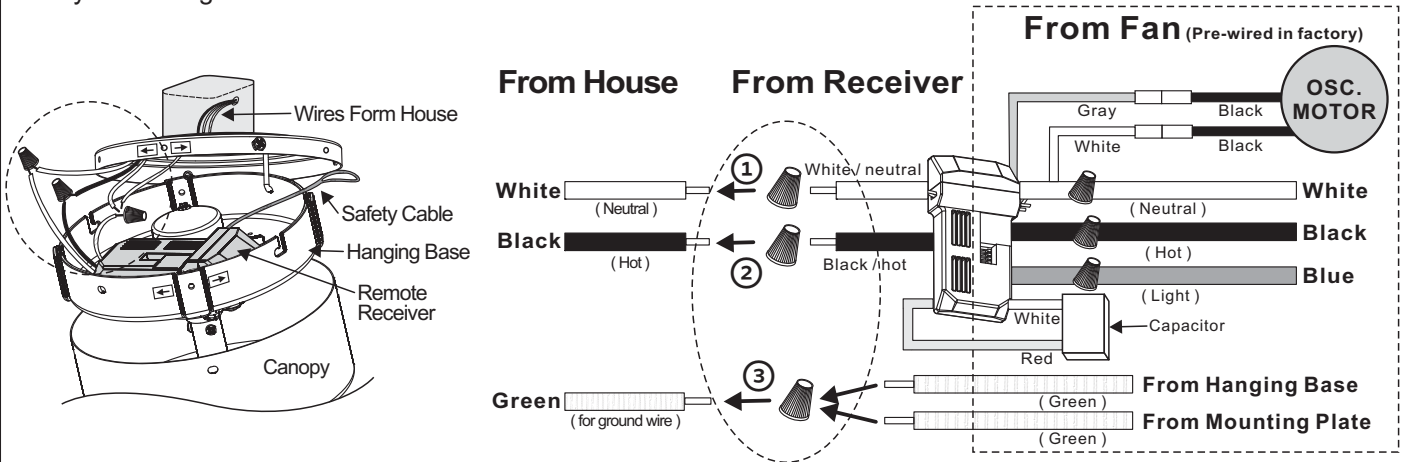
Lift the fan assembly and hang onto the **J hook** through oval-shaped hole on mounting plate. This will permit you to disconnect the wires connections without having to hold the fan up as well.



## 3. REMOVE WIRE CONNECTIONS

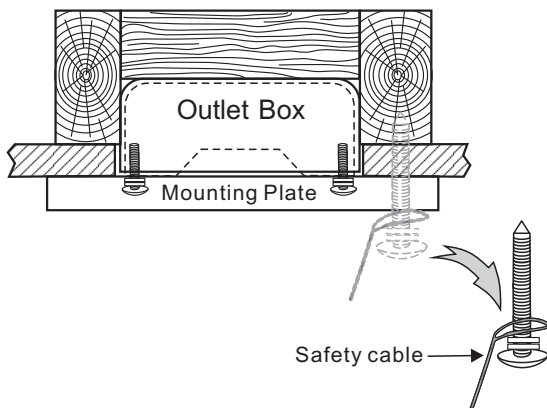
### 3A. Disconnect House Wires From Receiver Wires

- ① Disconnect White wire from house and White wire from receiver by removing wire nut.
- ② Disconnect Black wire from house and Black wire from receiver by removing wire nut.
- ③ Disconnect Ground wire from house and Ground wires from hanging base & mounting plate by removing wire nut.



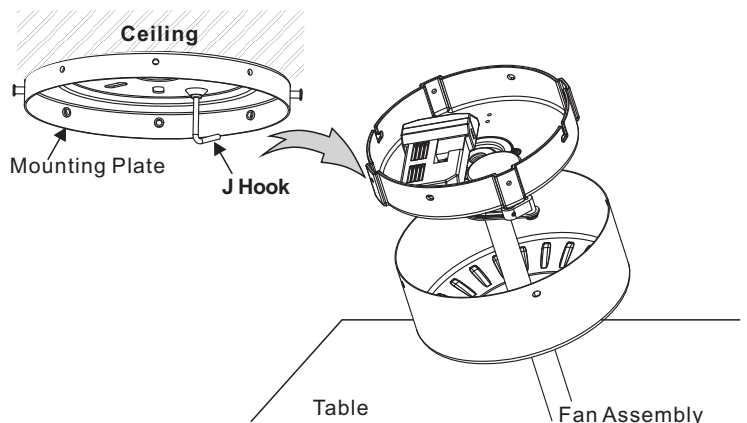
### 3B. Remove safety cable

Remove safety cable by loosening the wood screw, spring washer and flat washer from the ceiling.



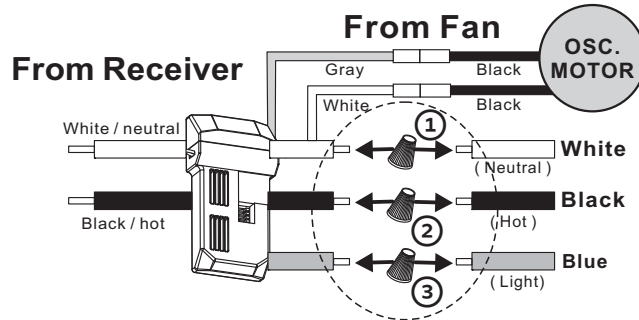
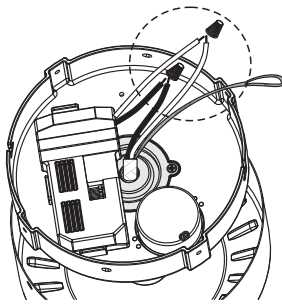
### 3C. Remove fan from ceiling

Lift the fan assembly from the J hook through oval-shaped hole on mounting plate, and remove the whole fan to a suitable place (i.e. table) where you can safely perform the following steps.



### 3D. Disconnect Fan Motor Wires

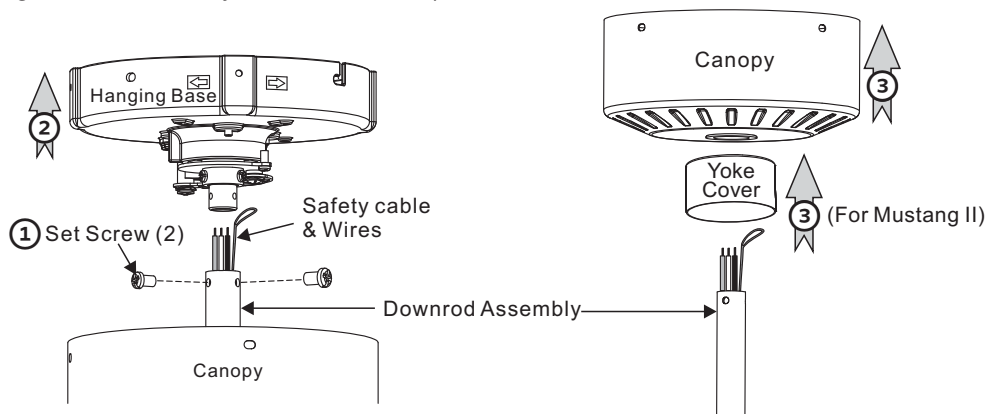
- ① Disconnect White wire from receiver and White wire from fan by removing wire nut.
- ② Disconnect Black wire from receiver and Black wire from fan by removing wire nut.
- ③ Disconnect Blue wire from receiver and Blue wire from fan by removing wire nut. (For Mustang II only)



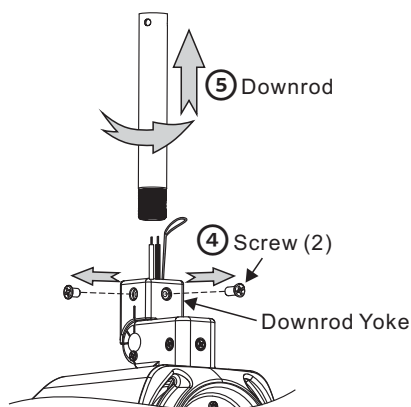
## 4. REMOVE DOWNROD

**Note:** Mustang and dual motor Mustang II have different constructions so there are 3 different steps (③④⑤) as shown below for each model to remove downrod.

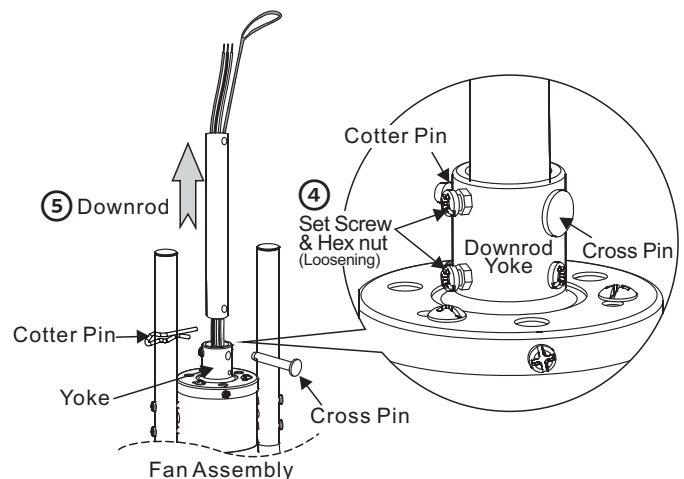
- ① Remove 2 set screws from downrod assembly. (Keep screws for Step 7-③.)
- ② Lift up the hanging base and remove it from downrod assembly.
- ③ Lift up the canopy and remove it from downrod assembly.  
(\* For Mustang II, remove the yoke cover also.)



- ④ Remove 2 set screws from downrod yoke. (Keep screws for Step 6-⑤.)  
(\* For Mustang II, loosen 2 set screws and hex nuts. )
- ⑤ Remove downrod by rotating counter-clockwise and pull out the wires and safety cable carefully.  
(\* Dual motor Mustang II downrod does not need to be rotated out, it slides out.)



**Mustang**



**Mustang II**

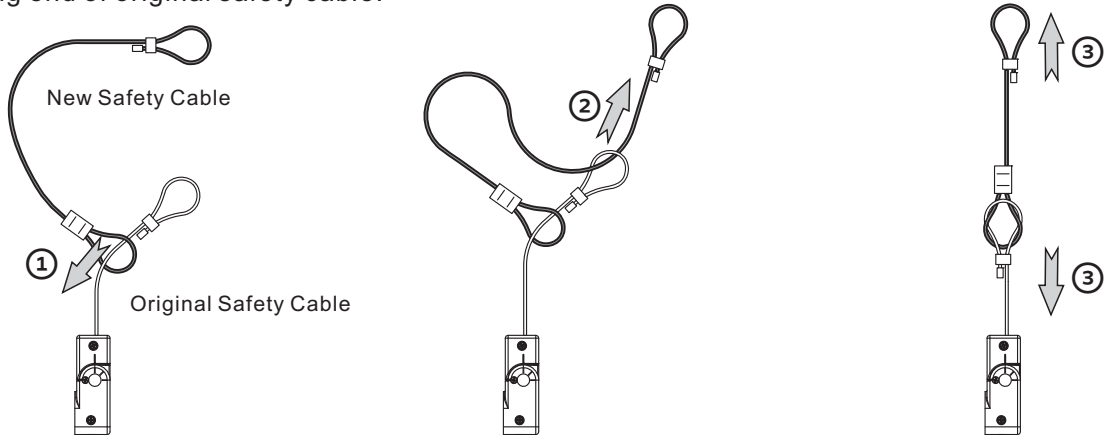
# INSTALLING PROCEDURES

## 5. SAFETY CABLE

**Note:** Each new downrod is packed with one new safety cable, one end of which is looped with copper ring ("copper-ring end") and the other one end is looped with crimp ("crimped end").

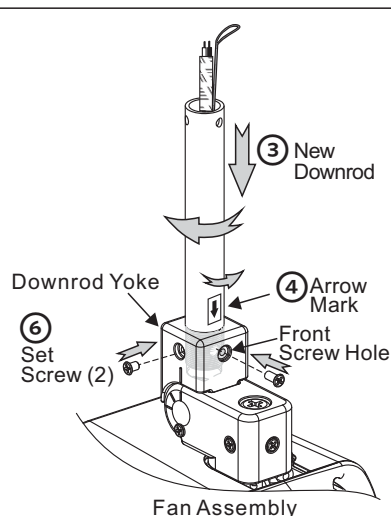
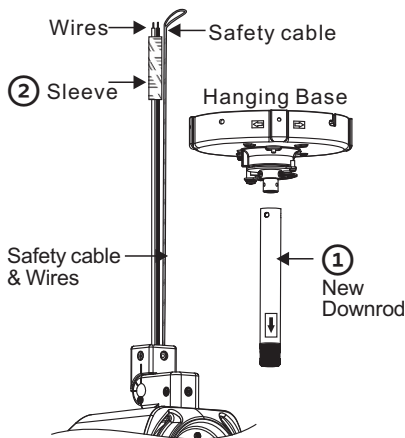


- ① Have crimped end of new safety cable go around original safety cable from fan by following the direction shown as picture below.
- ② Have copper-ring end of new safety cable pass through loop of original safety cable from fan by following the direction shown as picture below.
- ③ Pull straight and make both loops cross tightly between crimped end of new safety cable and copper-ring end of original safety cable.

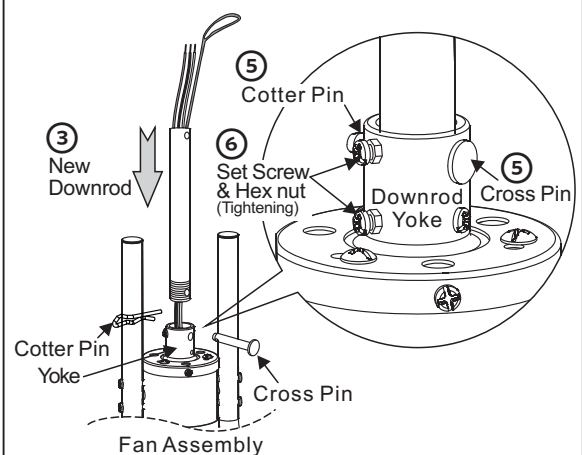


## 6. NEW DOWNROD INSTALLATION

- ① Make sure the wires and safety cable are long enough for the new downrod installation.
- ② Move the sleeve to the end of wires as shown below and keep it at the end while operating further steps.
- ③ Feed wires and safety cable through new downrod and insert new downrod into downrod yoke.
- ④ For single motor Mustang – Thread new downrod into downrod yoke by rotating clockwise until it goes no further, then slightly rotate it back to have arrow mark aligned to the front screw hole of downrod yoke. (see below)
- ⑤ For dual motor Mustang II – Slide new downrod into downrod yoke, aligning the large holes through both. Insert the cross pin through yoke and downrod, and secure with the cotter pin.
- ⑥ Secure downrod assembly with 2 set screws removed from Step 4-④.  
(\* For Mustang II, tighten 2 set screws and hex nuts.)



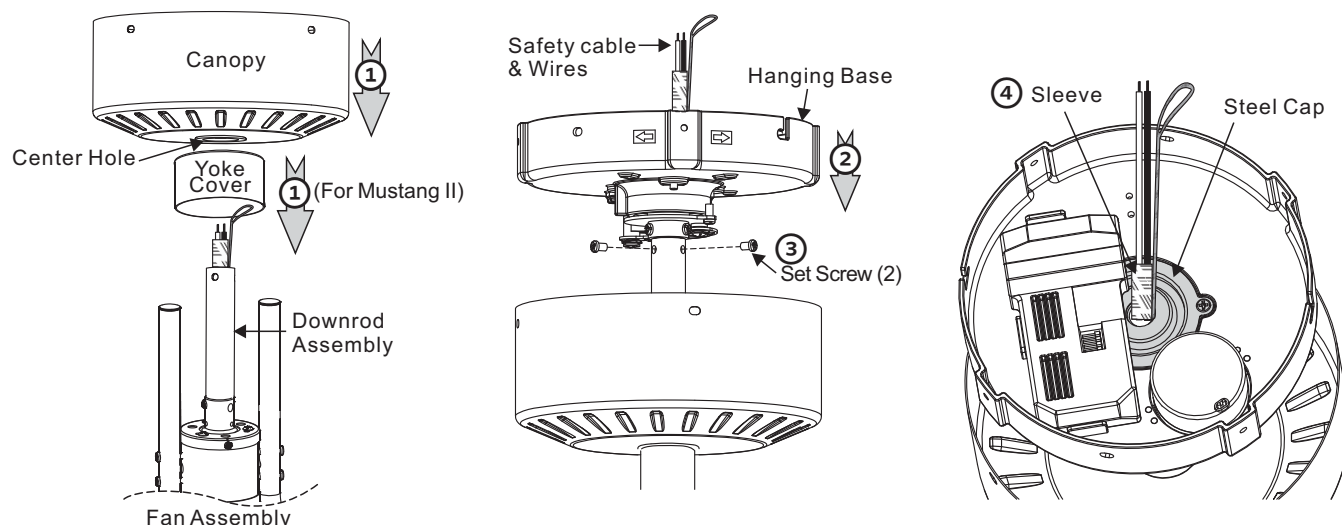
**Mustang**



**Mustang II**

## 7. HANGING BASE SYSTEM INSTALLATION

- ① Attach the canopy by inserting downrod assembly into the center hole of canopy.  
(\* For Mustang II, attach the yoke cover also.)
- ② Attach the hanging base to downrod assembly by inserting wires and safety cable through hanging base.
- ③ Secure with 2 set screws removed from Step 4-①.
- ④ Move the sleeve so it is centered in steel cap of hanging base, to protect wires during oscillations.



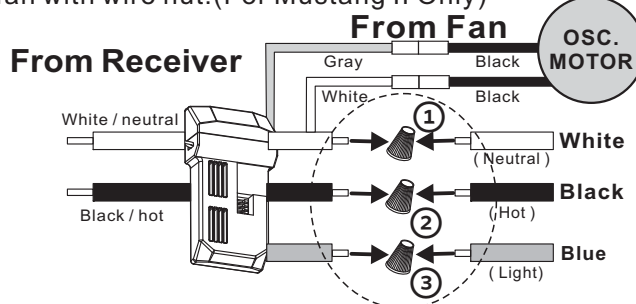
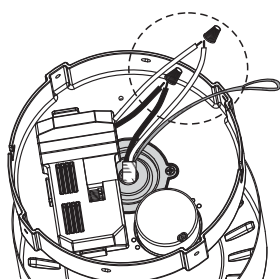
## 8. WIRE CONNECTION

Follow diagram below and make sure that all exposed wires are secured inside wire nuts.  
Note: Wires from house may vary in color and may not include ground wire (green).

After wiring is completed, collect wires neatly inside hanging base.

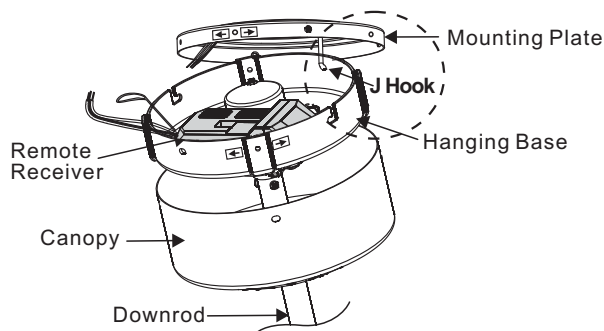
### 8A. Connect Receiver Wires to Fan Wires

- ① Connect White wire from receiver and White wire from fan with wire nut.
- ② Connect Black wire from receiver and Black wire from fan with wire nut.
- ③ Connect Blue wire from receiver and Blue wire from fan with wire nut. (For Mustang II Only)



### 8B. Hanging the fan

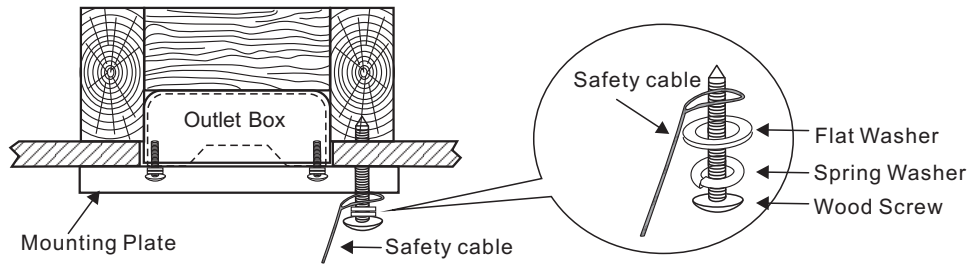
Lift the fan assembly and hang onto the **J hook** through oval-shaped hole on mounting plate.  
This will permit you to make the wire connections without having to hold the fan up as well.





## 8C. Attaching safety cable to ceiling joist

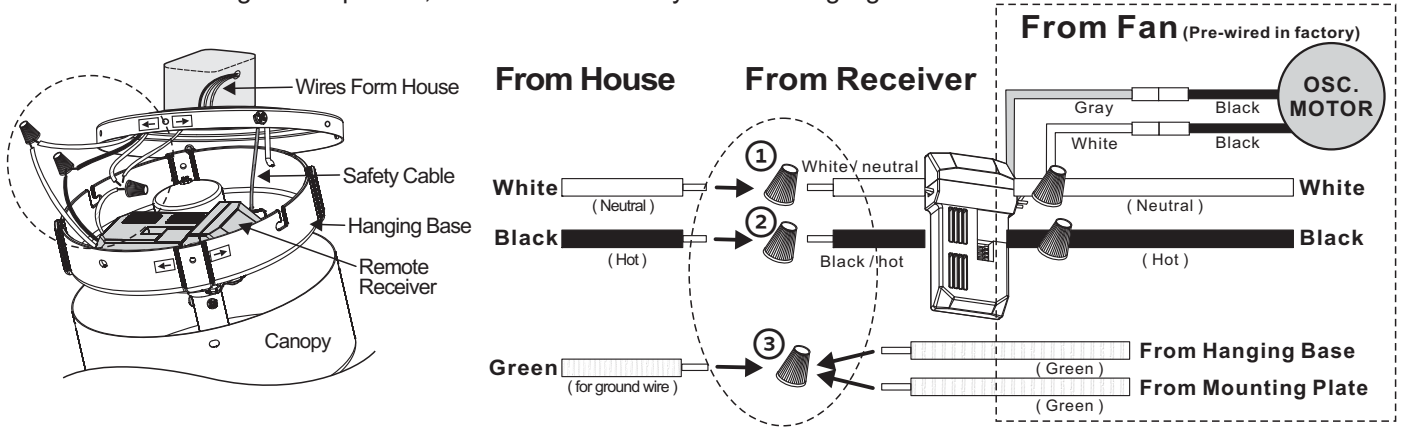
Attach safety cable to the ceiling by securing the wood screw, spring washer and flat washer.



## 8D. Connect House Wires to Receiver Wires

- ① Connect White wire from house and White wire from receiver with wire nut.
- ② Connect Black wire from house and Black wire from receiver with wire nut.
- ③ Connect Ground wire from house and Ground wires from hanging base & mounting plate with wire nut.

**Note :** After wiring is completed, collect wires neatly inside hanging base.

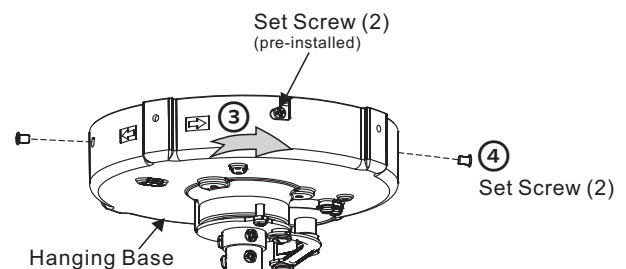
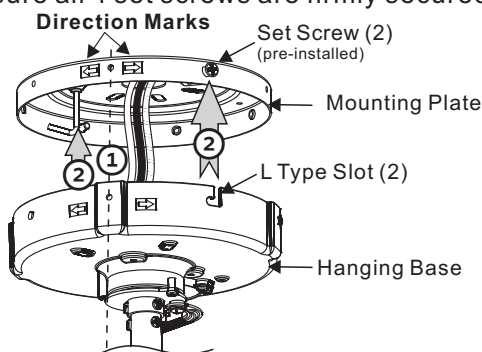


## 9. CANOPY AND HANGING BASE SYSTEM INSTALLATION

### 9A. Hanging base installation

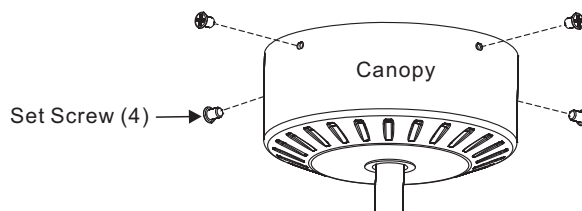
Carefully lift the fan assembly away from the hook on mounting plate.

- ① **Align direction marks** on mounting plate with **direction marks** on hanging base.
  - ② Push up hanging base until 2 set screws pre-installed on mounting plate are engaged with L type slots.
  - ③ Slightly rotate hanging base until 2 screw heads are in L type slots.
  - ④ Attach other 2 set screws removed from Step 2A.-② to secure the hanging base and mounting plate.
- Make sure all 4 set screws are firmly secured.



### 9B. Canopy installation

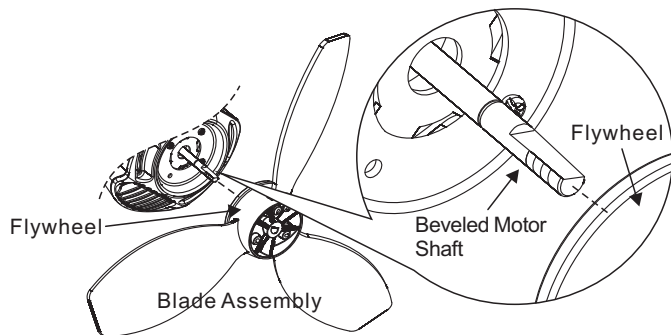
Push up canopy and secure to hanging base with 4 set screws removed from 2A.-①



## 10. BLADE ASSEMBLY INSTALLATION

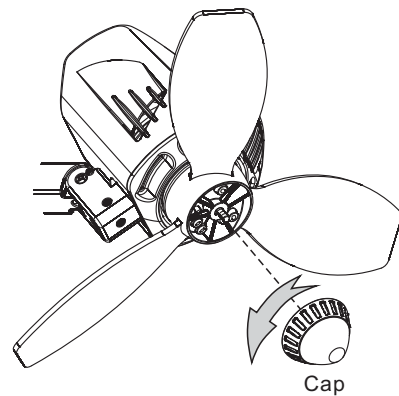
### 10A. Attach blade assembly to fan

Align beveled center hole on flywheel with beveled motor shaft before attachment.



### 10B. Attach cap to blade assembly

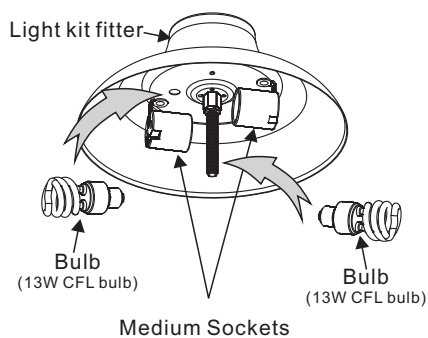
Thread the cap counter-clockwise to motor shaft until fully tightened.



## 11. LIGHT KIT INSTALLATION (FOR MUSTANG II ONLY)

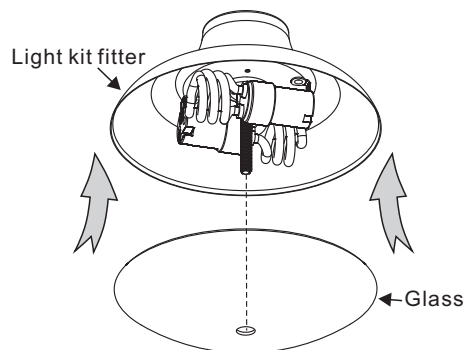
### 11A.

Install the bulbs (included) to the medium sockets (sockets) properly.



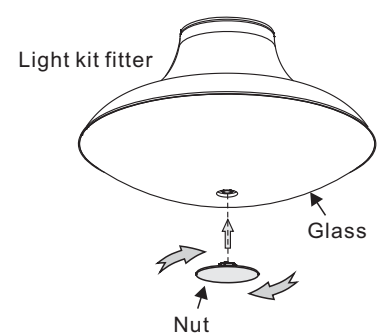
### 11B.

Align the hole on the glass with the threaded tube from light fixture. Attach the glass to light fixture.



### 11C.

Attach the nut to the threaded tube tightly.



**12. Turn on the power at breaker box - your fan is ready for operation.**